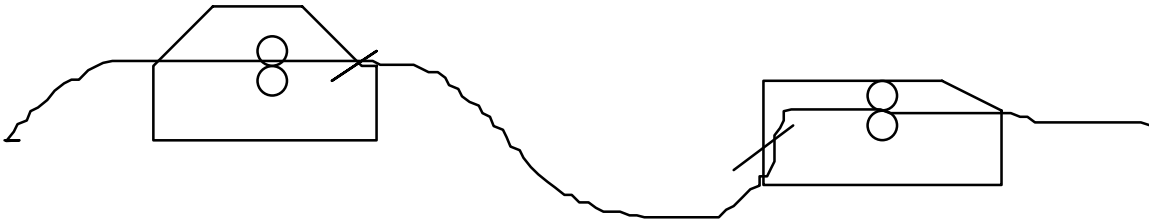


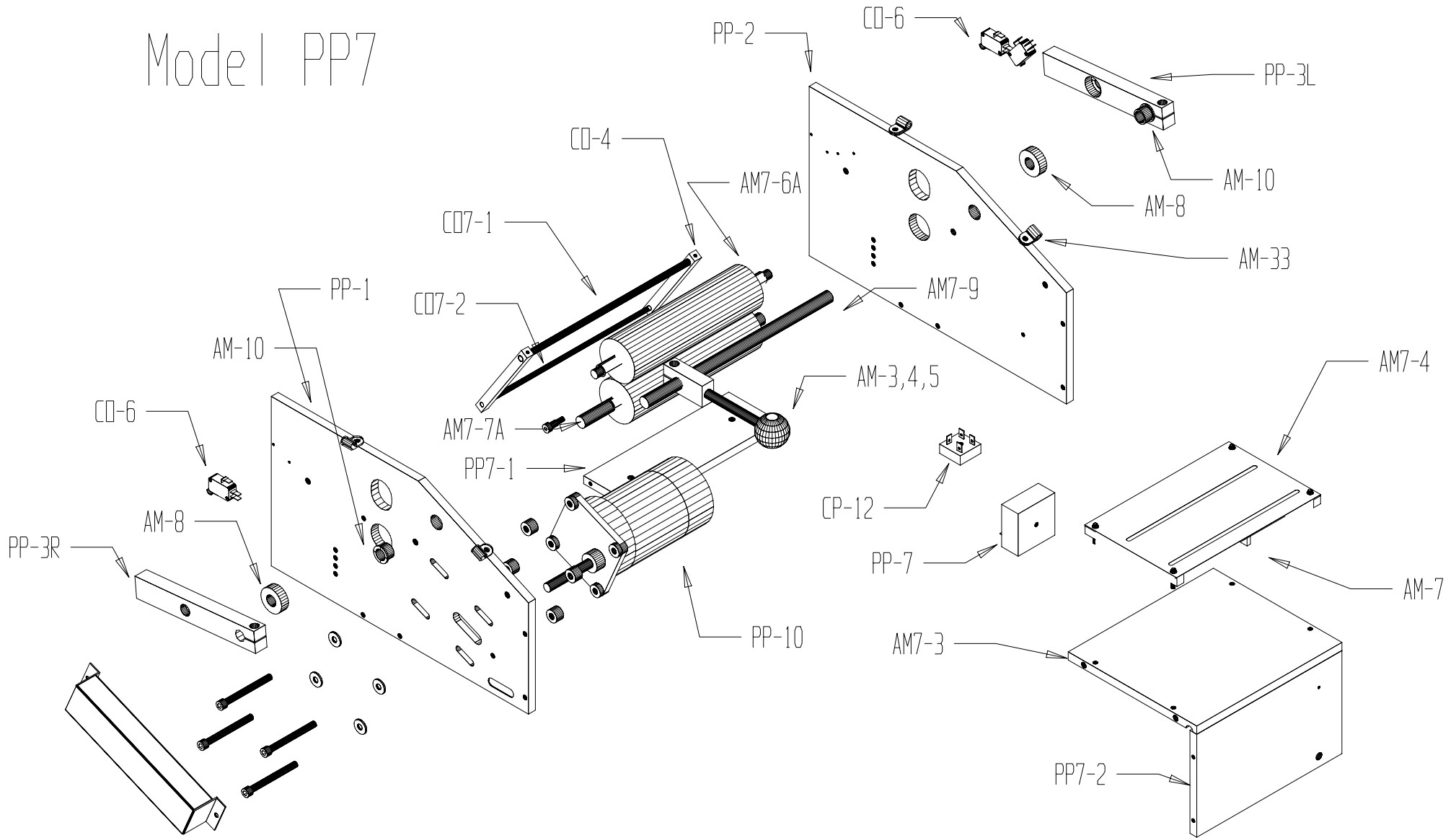
## Pre-Puller Setup Instructions

1. Place pre-puller approx. 3-4 feet from cutting head and approx. 2" below the strip cutting head.
2. Supply power to both machines and air to the strip cutter.
3. Connect the grey control cable between the strip cutter head and the control panel.
4. Run material through pre-puller guides, through rollers, over pivot rod, then under the trip rod.
5. Feed material under cutoff switch on strip cutter (if your machine has one), through the guide box, then through the rollers, just past the hot knife blade.

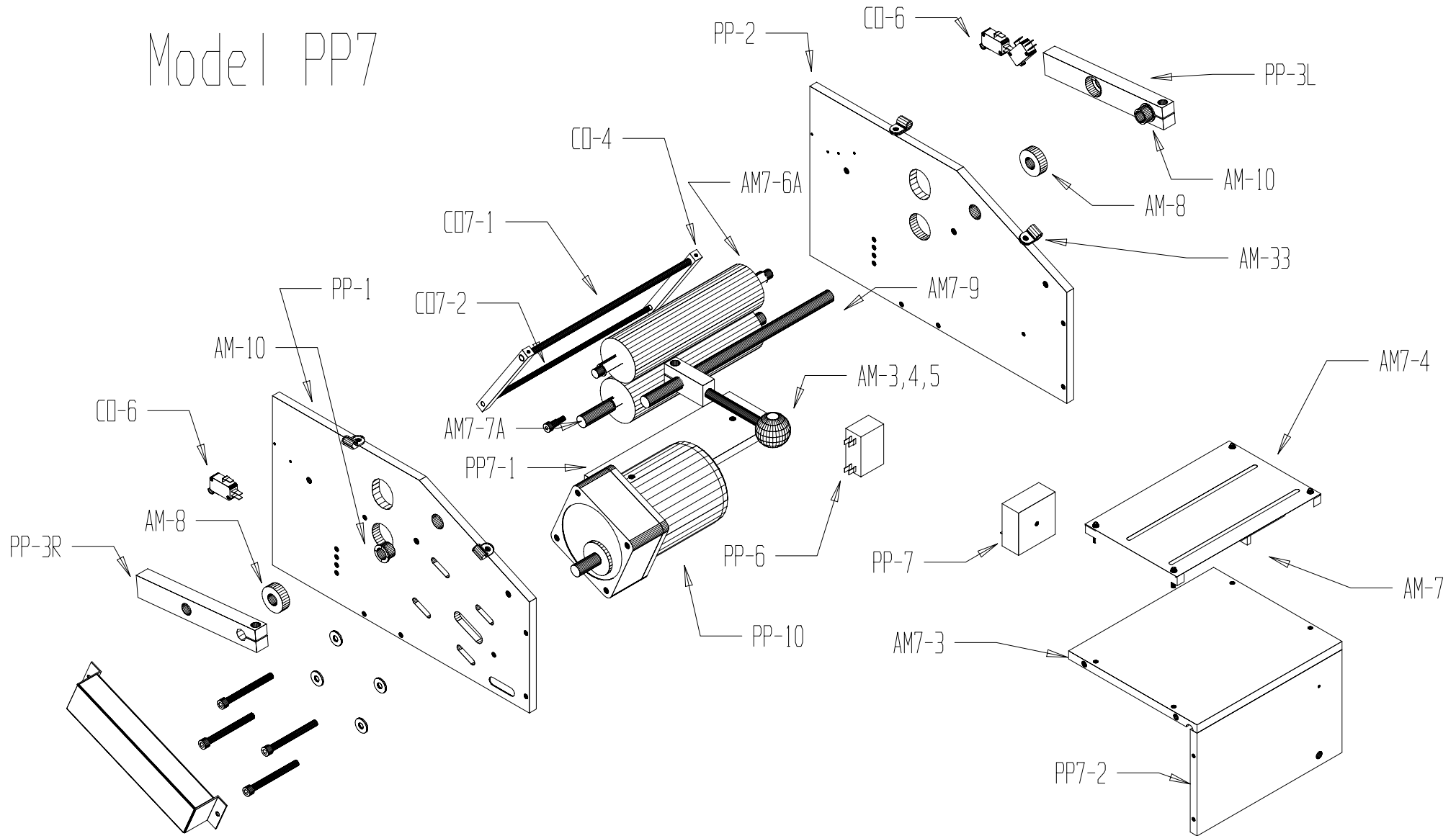


The amount of loop is adjustable by increasing the time-delay in the pre-puller. Call us for more details.

# Model PP7



# Model PP7



## **Periodic Maintenance**

Keep *Drive* and *Tension Rollers* clean of foreign matter. Proper *spring* tension is also important to machine accuracy. Too much pressure causes excessive drag, and too little will cause material slippage.

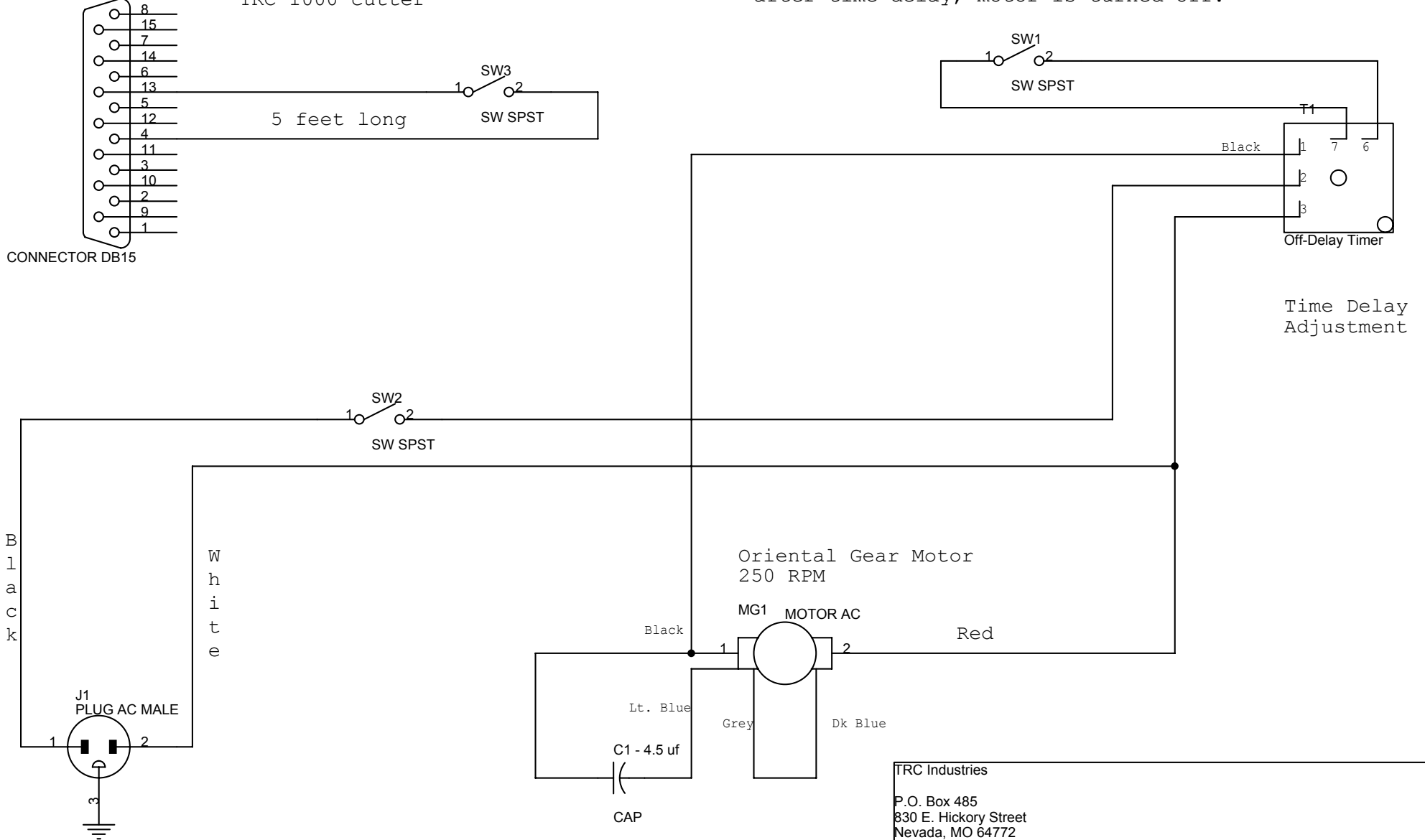
*Drive Belt* and *Pulleys* should be checked for slippage and looseness.

Periodically check all *screws* for loosening.

TRC 1000  
Control  
Cable P1

Optional switch to stop  
TRC 1000 cutter

This switch is wired in the normally closed state  
but the switch is normally open when motor is off  
close switch to run motor  
open switch then starts time delay  
after time delay, motor is turned off.



TRC Industries  
P.O. Box 485  
830 E. Hickory Street  
Nevada, MO 64772  
417-667-4477 ph 417-667-4039 fx

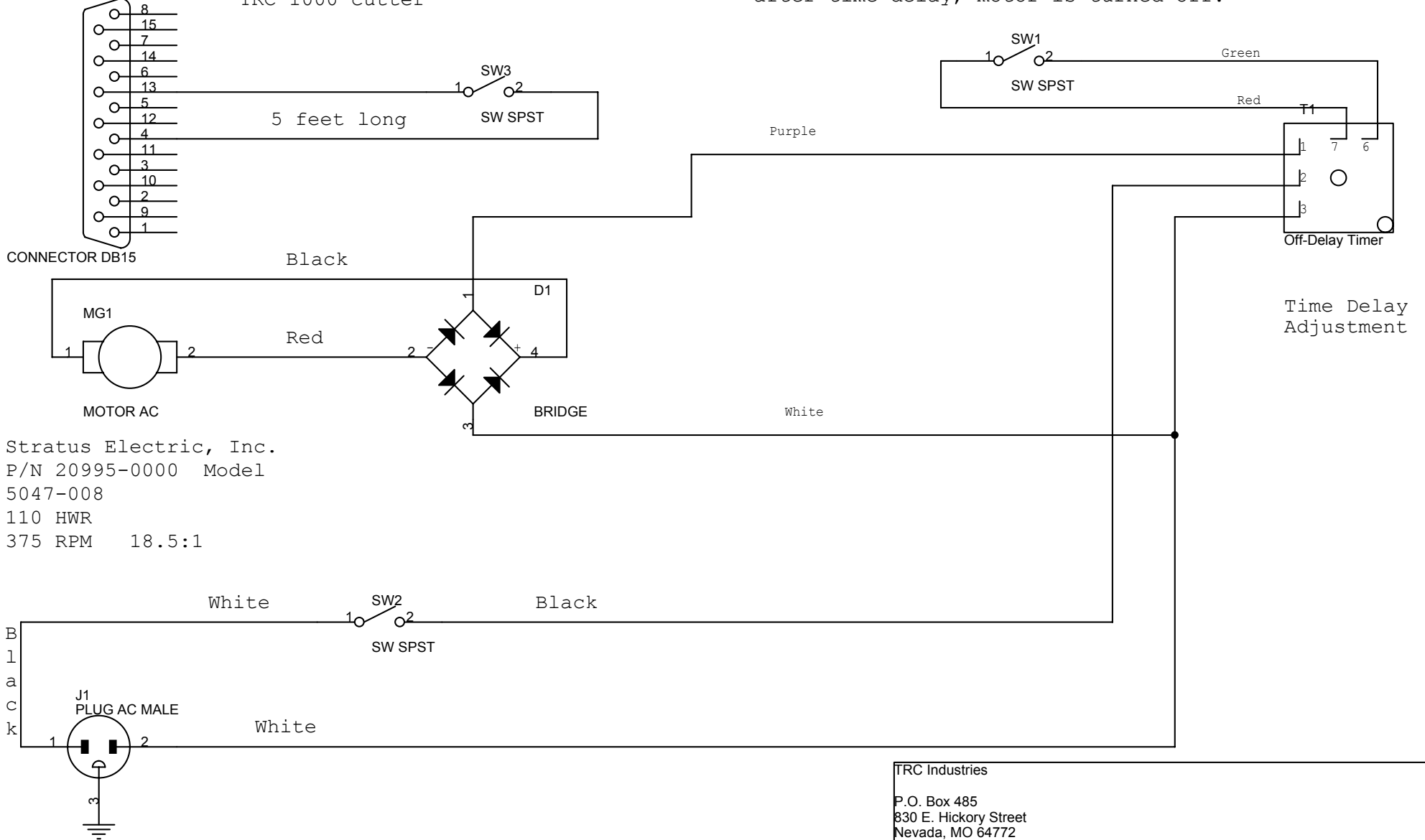
Size A	Document Number Pre Puller I	Rev A
-----------	---------------------------------	----------

Date: Tuesday, November 12, 2002 Sheet 1 of 1

TRC 1000  
Control  
Cable P1

Optional switch to stop  
TRC 1000 cutter

This switch is wired in the normally closed state  
but the switch is normally open when motor is off  
close switch to run motor  
open switch then starts time delay  
after time delay, motor is turned off.



Stratus Electric, Inc.  
P/N 20995-0000 Model  
5047-008  
110 HWR  
375 RPM 18.5:1

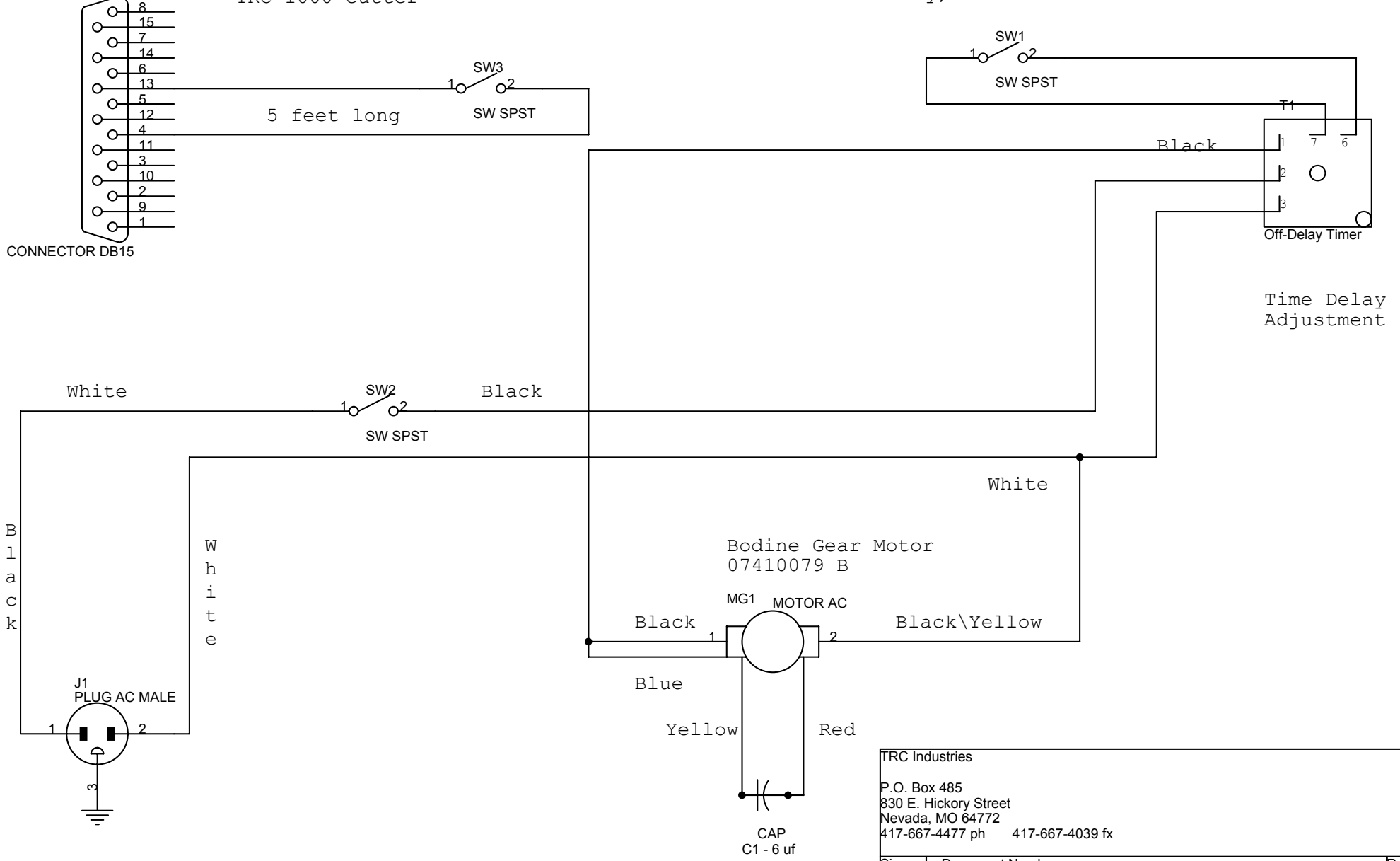
TRC Industries  
P.O. Box 485  
830 E. Hickory Street  
Nevada, MO 64772  
417-667-4477 ph 417-667-4039 fx

Size	Document Number	Rev
A	Pre Puller II	B
Date: Tuesday, November 12, 2002		Sheet 1 of 1

TRC 1000  
Control  
Cable P1

Optional switch to stop  
TRC 1000 cutter

This switch is wired in the normally closed state  
but the switch is normally open when motor is off  
close switch to run motor  
open switch then starts time delay  
after time delay, motor is turned off.

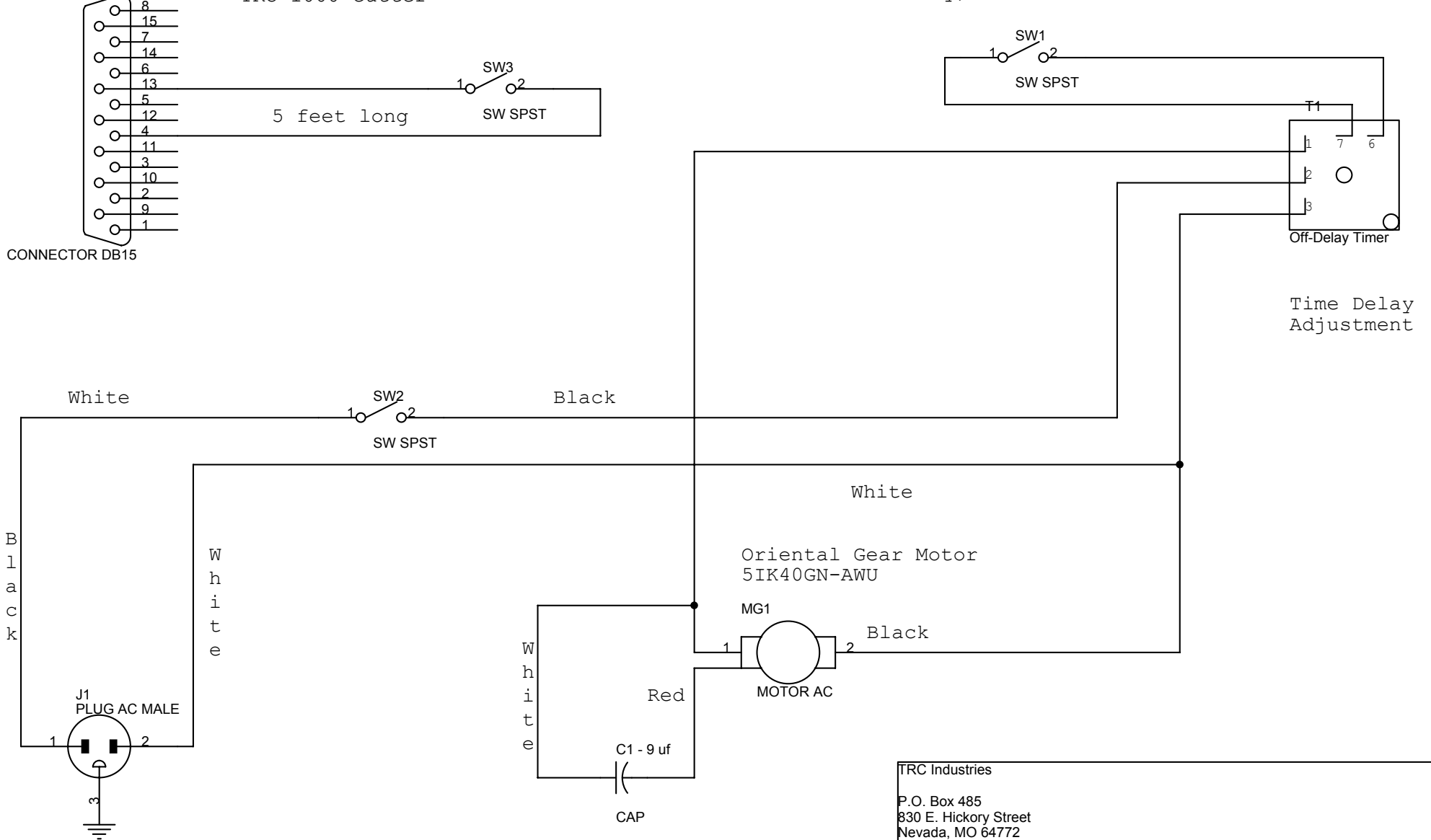


TRC Industries		
P.O. Box 485 830 E. Hickory Street Nevada, MO 64772 417-667-4477 ph 417-667-4039 fx		
Size A	Document Number Pre Puller III	Rev C
Date:	Tuesday, November 12, 2002	Sheet 1 of 1

TRC 1000  
Control  
Cable P1

Optional switch to stop  
TRC 1000 cutter

This switch is wired in the normally closed state  
but the switch is normally open when motor is off  
close switch to run motor  
open switch then starts time delay  
after time delay, motor is turned off.



TRC Industries  
 P.O. Box 485  
 830 E. Hickory Street  
 Nevada, MO 64772  
 417-667-4477 ph 417-667-4039 fx

Size A	Document Number Pre Puller IV	Rev D
-----------	----------------------------------	----------

Date: Tuesday, November 12, 2002 Sheet 1 of 1



