

SET UP PROCEDURES FOR THE TRC 1000

Model HC4-FS

1. Place *cutter* on a flat table.
2. Route footswitch to a safe comfortable place on the floor
3. Next hook up the *air regulator* to your air supply and set the pressure at 35 PSI.
4. Plug the power cord into a 110V outlet.

START UP PROCEDURES

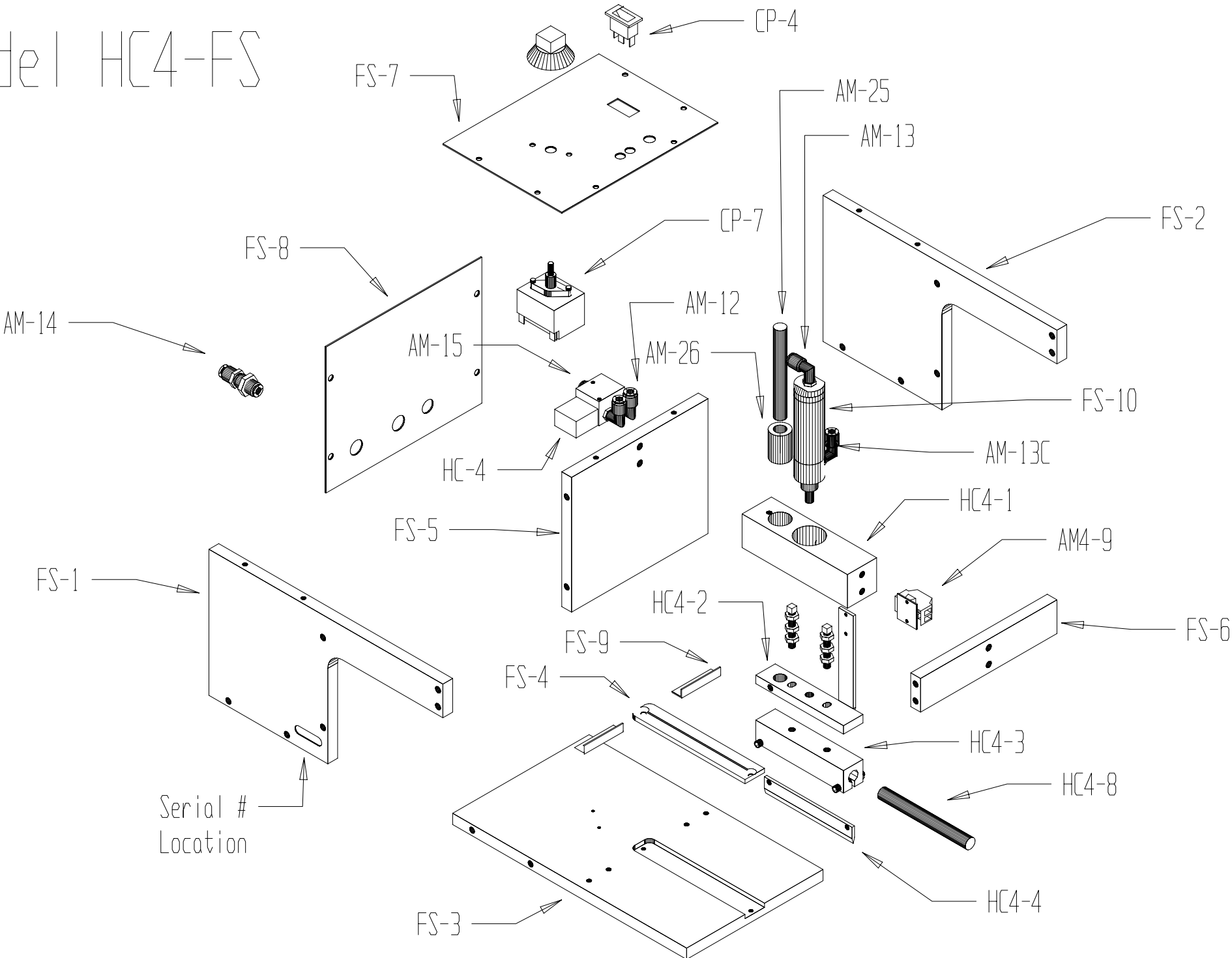
1. Turn *master switch* to **ON** position
2. Set the *temperature control knob* to 3 - 3.5 and allow 10 - 15 min. for the knife to heat up.

NEVER ALLOW THE KNIFE TO BECOME RED HOT AS THIS MAY CAUSE THE WEBBING TO CATCH ON FIRE.

Use just enough heat to cut the webbing and to keep the *knife blade* burned clean. You will have to experiment with the webbing you are using to find the exact temperature that works best.

3. Pull material across cutting plate. **KEEPING HANDS CLEAR OF KNIFE!**
4. Depress footswitch until knife passes through material.
5. When you are through with the *machine* turn the *Temperature control* to **OFF** and switch the *Master Switch* **OFF**.

Model HC4-FS



HC4-FS Parts List

<u>Item</u>	<u>Description</u>	<u>Price</u>
#4 split	#4 split l/w znc	\$0.50
1/4-20 SS nut	1/4-20 Stainless Steel jam nut	\$0.50
1/4-20x1 B	1/4-20 x 1 Button Head Socket Cap Screw	\$0.50
1/4-20x1.5SS	1/4-20 x 1 1/2 Stainless Steel Square Head Set Screw	\$0.50
1/4-20x1/4 SS	1/4-20 x 1/4 Stainless Steel Socket Head Set Screw	\$0.50
1/4-20x1/4set	1/4-20 x 1/4 Socket Head Set Screw	\$0.50
1/4-20x3/4 B	1/4-20 x 3/4 Button Head Cap Screw	\$0.50
1/4-20x3/4 TM	Roll Holder Thumb Screw\n	\$0.75
1/4-20x3/8set	1/4-20 x 3/8 Stainless Steel Square Head Set Screw	\$0.50
1/4-20x5/8 B	1/4-20 x 5/8 Button Head Socket Cap Screw	\$0.50
1/4-28 nut	1/4-28 mild steel jam nut	\$0.50
10-32SS nut	10-32 Stainless Steel jam nut	\$0.50
10-32x1.25SSS	10-32 x 1 1/4 Stainless Steel Socket Head Cap Screw	\$0.50
10-32x1/4 B	10-32 x 1/4 Button Head Socket Cap Screw	\$0.50
10-32x3/4 B	10-32x3/4 BHSC	\$0.50
10-32x3/8 B	10-32 x 3/8 Button Head Socket Cap Screw	\$0.50
4-40 nut	4-40 jam nut mild steel	\$0.50
4-40x7/8 sl	4-40 x 7/8 slt rnd m/s znc	\$0.50
6-32x1.25 P	6-32 x 1 1/4 Phillips Head Pan Screw Mild Steel	\$0.50
AM-12	90 Swivel/Hose	\$5.00
AM-13	90 degree elbow push-in	\$5.00
AM-13C	90 degree elbow Compression	\$5.00
AM-13C-1	1/4 Nut/Sleeve Brass Poly Fit Fittings	\$1.00
AM-13C-2	1/4 Ferrules, For Brass Poly Fit Fittings	\$0.50
AM-14	Bulkhead/hose	\$5.00
AM-15	Straight push in air fitting	\$5.00
AM-16	1/4 NPT - 1/4 tube Adapter	\$5.00
AM-17	Air Filter/Regulator	\$48.00
AM-17/A	Complete Air Filter/Regulator Assembly, guage, fitting ar	\$65.00
AM-17-4	Air Filter/Regulator Bracket	\$10.00
AM-25	Linear Shaft 4' long 1/2' diam.	\$15.00
AM-26	Linear Bushing	\$20.00
AM-30	1/4' O.D. Soft tubing	\$0.65
AM-31	1/4' O.D. Nylon tubing per foot	\$0.65
AM-32	1/4' teflon tubing/ft	\$2.50
AM-33	1/4' Hose Clamp	\$0.50
AM-34	3/8' Cable Clamp	\$0.50
CP-4	Power Switch	\$4.00
CP-7	TRC Thermostat	\$55.00
CP-7-KNB	Knob for TRC Thermostat	\$5.00
FS-1	FC Right Side Plate	\$250.00
FS-2	FC Left Side Plate	\$250.00
FS-3	FC Base Plate	\$100.00
FS-4	FC Cutting Plate Insert	\$25.00
FS-5	FC Divider Plate	\$50.00
FS-6	FC Mounting Plate	\$30.00

<u>Item</u>	<u>Description</u>	<u>Price</u>
FS-7	FC Top Plate	\$25.00
FS-8	FC Back Plate	\$25.00
FS-9	FC Guide Strips	\$5.00
FS-10	FC Air Cylinder	\$50.00
FS11	FC Foot Control Switch	\$35.00
FS-12	Rubber Grommet 3/8 x 1/4	\$0.00
HC-4	Air Valve 45 series	\$45.00
HC-6	Air Pressure Guage	\$13.00
HC4-1	4 1/2' Hot Cutter Linear Motion Block	\$85.00
HC4-2	4 1/2' Hot Knife Blade Carrier	\$50.00
HC4-3	4 1/2' Heating Block	\$65.00
HC4-4	Hot Knife Blade 4 1/2'	\$8.00
HC4-4C	4 1/2' Copper Hot Knife Blade	\$15.00
HC4-8	Heating Element 4 1/2'	\$55.00
HC4-9	Heater Terminal Block	\$10.00
HC4-FS	4 1/2' Manual Feed Hot Cutter	\$950.00
HRC	Heat Release Compound	\$5.00
Labor	Labor	\$60.00

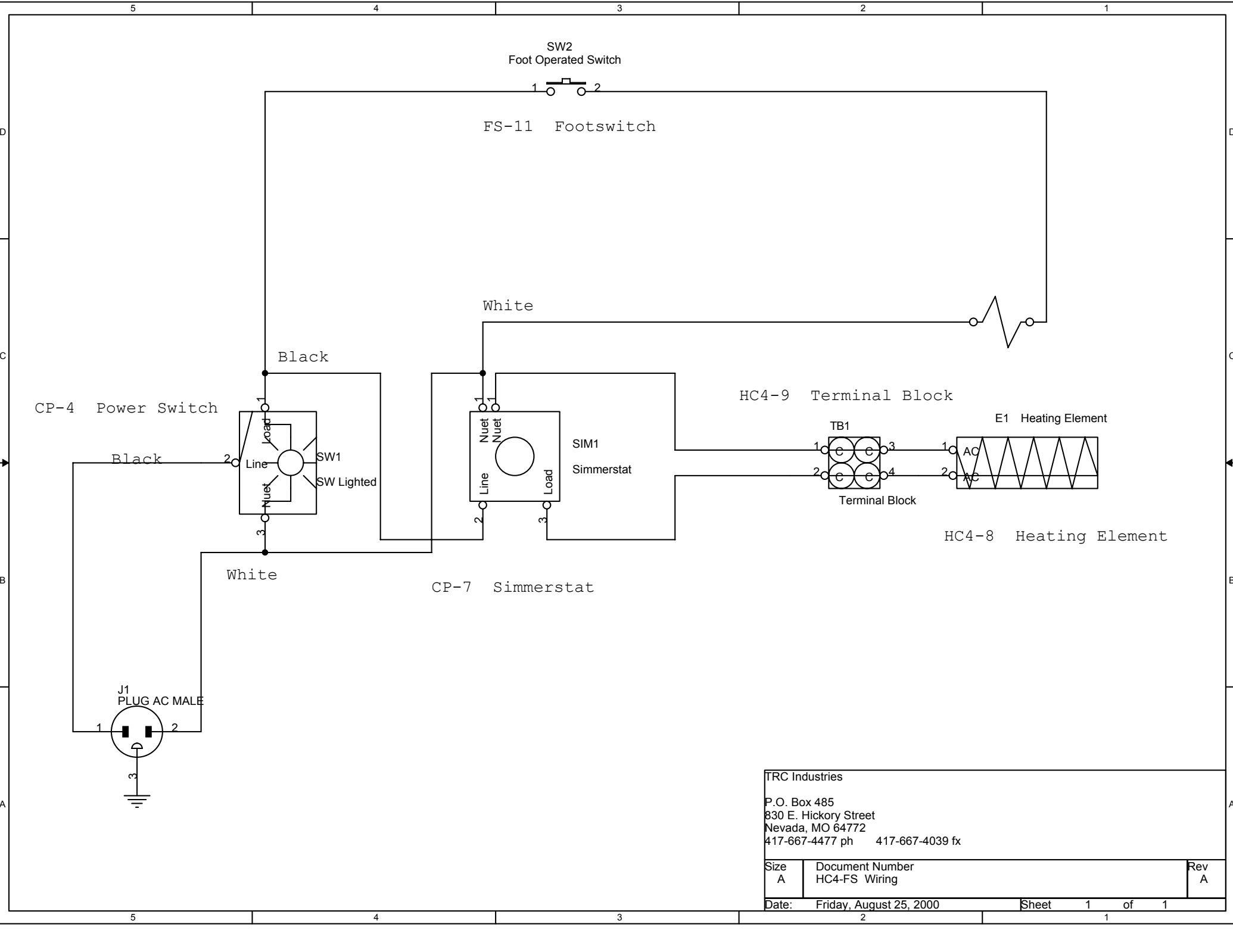
Periodic Maintenance

Proper operation of your *TRC-1000* can be maintained by periodic cleaning, lubrication and adjustment of the *Cutting Unit*.

Linear Shafts/Bushings and *Air Cylinder shafts* should be kept clean of dust, lint and other foreign substances. These points should also be lubricated periodically with a light weight oil, such as sewing machine oil.

The Cutting Blade and Groove on the Cutting Plate should be scraped clean.

Periodically check all *screws* for loosening.



TRC Industries
P.O. Box 485
830 E. Hickory Street
Nevada, MO 64772
417-667-4477 ph 417-667-4039 fx

Size A	Document Number HC4-FS Wiring	Rev A
-----------	----------------------------------	----------

Date: Friday, August 25, 2000 Sheet 1 of 1

TRC Industries

Factory Warranty Registration Card

Company Name _____
Address _____
City, ST, Zip _____

Phone _____ Email Address _____
Fax _____ Website _____
Contact Person _____

Date Purchased _____ Dealer Name _____
P.O. # _____ Address _____
Model _____ City, ST, Zip _____
Serial # _____
Phone _____
Fax _____
Salesman _____

Mail to:
TRC Industries
P.O. Box 485
Nevada, MO 64772

or Fax to 417-667-4039

Atten: Jon

Please visit our Page on the Internet at
<http://www.trcind.com>
or email us at
register@trcind.com